

2 BURNER LP Gas Stove

Instruction Manual



IMPORTANT

Read these instructions for use carefully. Familiarise yourself with the appliance before connecting it to its gas container. Keep these instructions for future reference.



CERT: 4411

Part No. COMP203

GENERAL WARNINGS

- This appliance shall only be connected to cylinder with a 3/8" LH BSP gas cylinder valve certified to AS2469 standards. This appliance is designed for outdoor use only and must be operated away from any flammable material or surfaces and materials.
- Use only with propane fuel.
- This appliance is to be stored in a dry and well ventilated location free from direct sunlight. Do not store when still connected to the cylinder. Make sure that the cylinder is disconnected and is stored in a well ventilated area, free from direct sunlight, heat and ignition sources. If being stored indoors, ensure that the location complies with the standard AS/NZS1596.
- Do not use this appliance if it has worn or damaged seals.
- This appliance must only be serviced by an authorised service agent, return to your place of purchase for service and repair.

DANGER!

- During operation all surfaces will be extremely hot and should not be touched or handled.
- Do not use the appliance if it has a leak, worn, deteriorated or damaged seals.
- Handle with care even after brief use, always pick up using the handle not the cylinder.
- It may be hazardous to attempt to fit other types of gas containers or cartridges.
- Use only in well ventilated areas.
- Always operate appliance a minimum of 800mm from flammable materials, walls and ceiling.
- Do not use adaptors or modify appliance to fit other connectors or cylinders.
- Do not use multiple appliances to heat a single utensil.
- Children must be supervised by an adult at all times.
- Never leave appliance unattended when operating.
- Use as a cooking appliance only, is not to be used as heater or modify for any other reason.
- Avoid boil over and spills on to burners.

CARBON MONOXIDE HAZARD

- This appliance produces carbon monoxide which has no odour. Using the appliance in enclosed spaces, for example; caravan, car, boat or mobile home could cause **DEATH**.

IMPORTANT

- Keep away from children at all times.
- Surfaces of the appliance will become hot during operation please take care when handling or moving the appliance.
- Appliance is to be used on a stable, level, flat non-flammable surface, the appliance should be protected from direct drafts and in a well ventilated place.
- Only cooking vessels with a maximum diameter of 220mm are to be used with this appliance.
- Take care that the primary air intakes, located on the burner tube of this appliance are not obstructed, or that air flow is restricted by placing items or other appliances close to or adjacent to the inlets.
- If you smell gas immediately turn the gas off at the cylinder and move the appliance and cylinder to a well ventilated area outside, keeping well away from sources of heat such as naked flames and pilot lights.
- Do not attempt to move or relocate the appliance when it is operating, extinguish the burner and allow to cool, disengage the gas cylinder then move the appliance.

CHECKING FOR GAS LEAKS

- Check that all connections are tight and that the gas cylinder connection has been tightened before you turn the cylinder gas valve on.
- **NEVER** check for leaks with a flame or pilot light.
- Using soapy water coat all connections, if bubbles appear turn the cylinder gas control off and retighten the connection before re-testing.
- Inspect the appliance regularly for signs of wear, leaks or incorrect operation. If symptoms such as flaring of the burners, issues with lighting, damages to hoses or connections or leaks from seals or gas controls are identified do not attempt to repair, return to your authorised stockist for service and maintenance.
- To check if gas remains in the cylinder, disconnect from the appliance and hold the cylinder in a vertical position then shake from side to side, if there is a sound or feel of liquid movement inside the cylinder contains gas.
- When changing gas cylinders ensure this is conducted outside in a well ventilated location free from people, animals and ignition sources such as naked flames, pilot lights and electrical equipment with heaters or elements.

OPERATING THE APPLIANCE

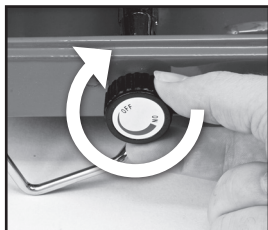
1. Gas control
2. Burners
3. Cylinder connection
4. Stove connection
5. Hose
6. Wind shield



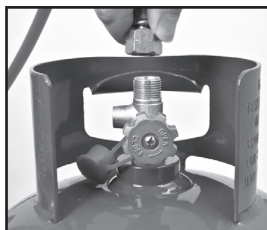
1.CONNECTION

Your stove is designed to connect directly on to a 3/8" LH BSP camping gas cylinder using the specially designed LP Gas hose supplied with the appliance.

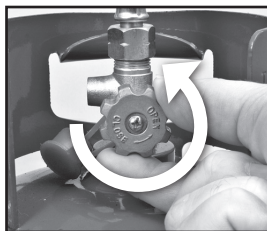
1. Check that the gas controls are in the "Off" position (turned fully clockwise).
2. Take the stove connector head of the hose and attach to the gas inlet on the appliance, tighten up using fingers.



3. Attach the other end of the hose to the gas cylinder, tightening using a spanner.

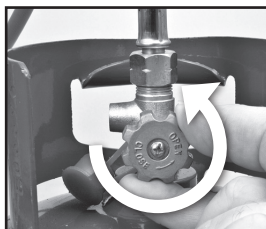


4. Turn the cylinder gas valve on in an anti-clockwise direction for one full turn and then check the connections for leaks with soapy water, if a leak is detected turn the cylinder gas valve "Off" and retighten all connections then retest.



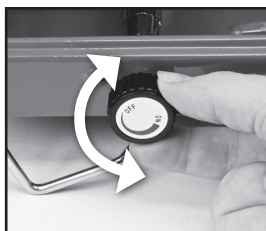
2. LIGHTING BURNER

1. Check that the gas control is shut off, then turn the gas cylinder valve on in an anti-clockwise direction for one full turn.
2. Take a lit match or lighter and position close to the edge of the burner that is to be ignited, slowly turn the gas control in an anti-clockwise direction approximately $\frac{1}{4}$ of a turn.
3. If the burner does not ignite, turn the gas control in the clockwise direction to the "Off" position and allow the residual gas to disperse before attempting to reignite the burner.



3. ADJUSTING FLAME

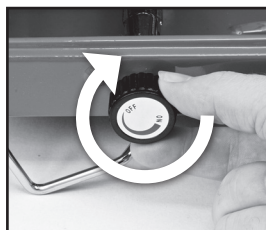
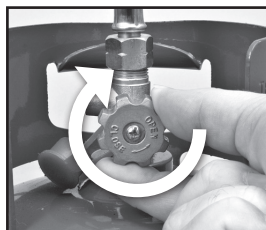
1. Turn the gas control in an anti-clockwise direction to achieve a higher flame and in the clockwise direction for a lower flame.



4. TURNING THE APPLIANCE OFF

If the appliance is no longer to be used and to reduce the risk of blocked gas jets caused by excess gas being left in the hose, all remaining gas must be expelled from the hose assembly.

1. With the flame still operating, turn the valve on the gas cylinder in the clockwise direction until it is "Off". Allow the flame to burn down then extinguish once all remaining gas in the hose has been used.
2. Turn the gas controls on the appliance clockwise to the "Off" position.



CARE INSTRUCTIONS

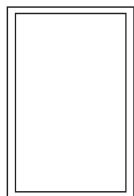
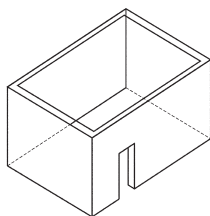
Your appliance is manufactured with a hard wearing powder coated finish on the cabinet, chrome plated burners, trivet and stainless steel drip tray (if fitted) and is easy to clean.

Using warm soapy water with a mild detergent wipe down all surfaces and areas of the appliance, taking care not to allow water to enter the burner outlets or aeration holes located in the burner tube.

DO NOT submerge the appliance in a sink or bowl.

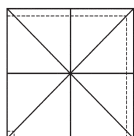
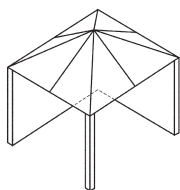
DO NOT use abrasive cleaners or bleach.

SAFETY INSTRUCTIONS

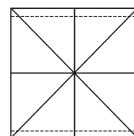
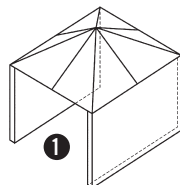


This appliance must only be used in an above ground open air situation with natural ventilation, without stagnant areas, where gas leakage is rapidly dispersed by wind and natural convection.

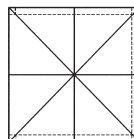
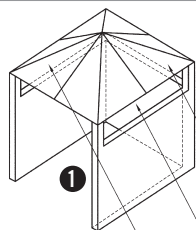
Any enclosure in which the appliance is used should comply with one of the following:



(A) An enclosure with walls on all sides, but with no overhead cover.

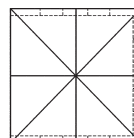
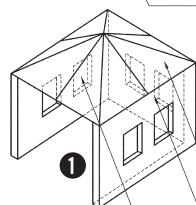


(B) Within a partial enclosure that includes an overhead cover and no more than two walls.



(C) Within a partial enclosure that includes an overhead cover and more than two walls, the following must apply:

- (1) At least 25% of the total wall area is completely open.
- (2) 30% or more in total of the remaining wall side, back and front wall areas is open and unrestricted.
- (3) In the case of balconies, 20% or more of the total wall area must remain open and unrestricted.



2

2

TECHNICAL DETAILS AND SPARE PARTS

Code	COMP203
Description	2 Burner LP Gas Stove
Size	464 x 289 x 82mm
Weight	4.3kg

A selection of spare parts and components are available for your appliance to ensure years of operation.

Spare Part List		
1	PCS7012	Trivet
2	PCS6023	Medium burner
3	PCS6012	Large burner
4	PCS5023	Gas jet medium burner
5	PCS5012	Gas jet large burner
6	PCS8951	"O" ring for spindle
7	PCS8950	Spindle
8	PCS8952	Lock nut
9	PCS8949	Control knob
10	PCS8414	"O" ring for gas connector
11	HP1200F	1200mm gas hose

Gas Jet	
Medium Burner:	0.15mm
Large Burner:	0.18mm

Consumption	
Inlet Pressure:	Cylinder Pressure
Medium Burner:	136g/hr 6.8Mj/hr
Large Burner:	180g/hr 9.1Mj/hr

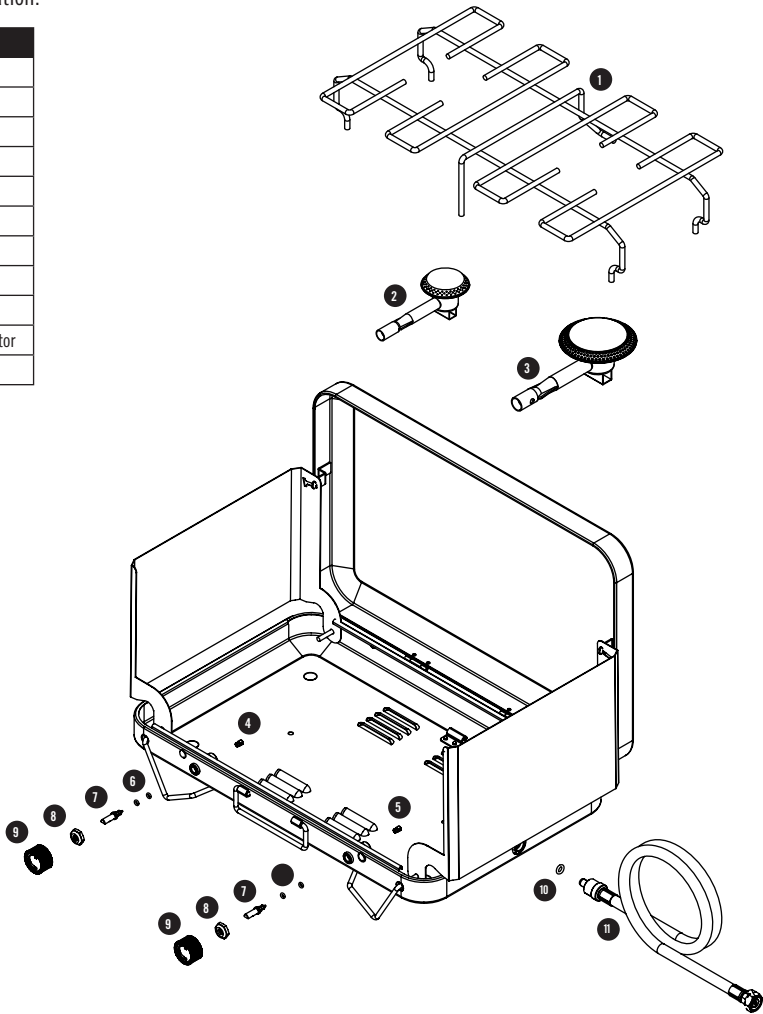
WARRANTY

This appliance is covered against faulty workmanship and materials for a period of 12 months from the date of original purchase.

The following items are not covered by warranty:

- Blocked jet nipples

Each of these items are a serviceable part and are readily available from your specialist outdoor retailer.



Distributed by
PRIMUS AUSTRALIA Pty Ltd
Bundoora Victoria 3083
www.primusaustralia.com.au